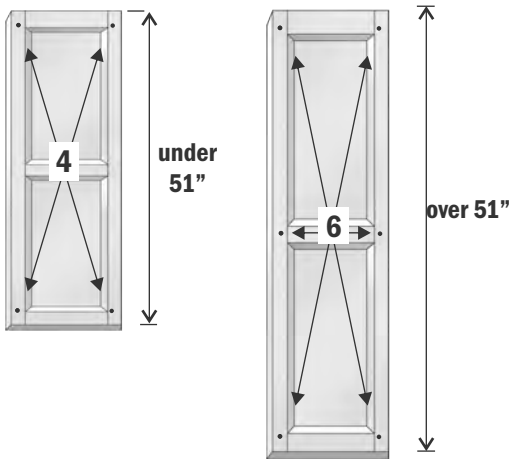
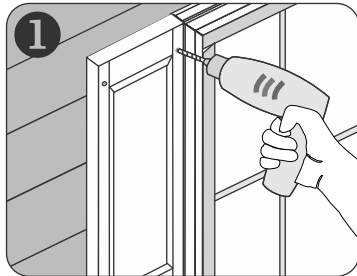


The following instructions apply to both the louvered and panel style shutters. For Board & Batten applications, see specific instructions.

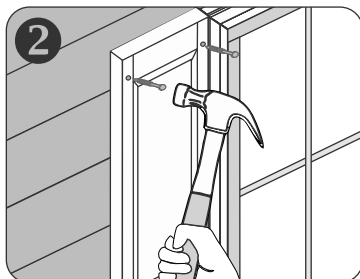


Shutter Plugs

1 Drill 1/4" holes thru the shutter AND the wall to a depth of 3-1/4"

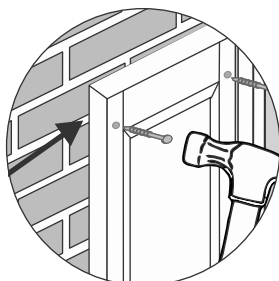


2 Tap in the shutter plug gently with a hammer. Do not over tighten the shutter.



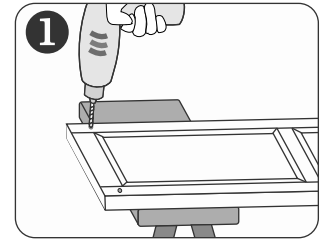
Particular Applications:

Masonry
Place fasteners in mortar joints

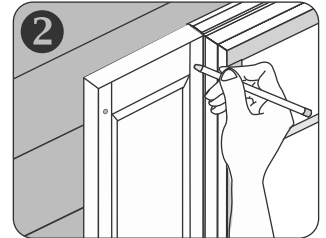


Screws & Caps

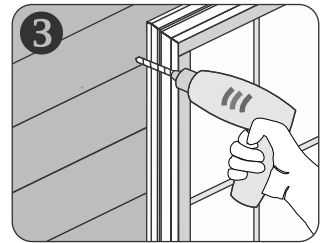
1 Pre-drill 11/64" holes through shutter only.



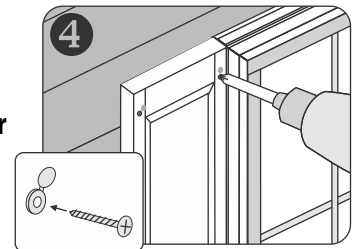
2 Mark the screw location onto the siding.



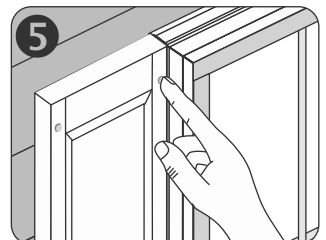
3 Drill 3/64" holes through the siding.



4 Install shutter using supplied screws. Do not over tighten.

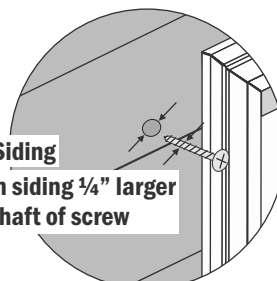


5 Snap the screw covers over the heads of the screws.

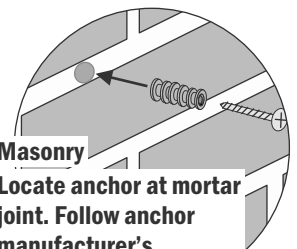


Particular Applications:

Vinyl Siding
Hole in siding 1/4" larger than shaft of screw



Masonry
Locate anchor at mortar joint. Follow anchor manufacturer's instructions.



Tools required for Wood, Composition, Metal and Vinyl Siding:

Drill, 1/8" Drill Bit, Phillips Screwdriver

Tools required for Brick, Stone and Other Masonry:

Drill, 1/4" Carbide Drill, #8 x 1" Masonry Anchors, Phillips Screwdriver

Hardware:

Screws (Bag of 12), Shutter Board, Batten



Figure 1



Figure 2



Figure 3

STEP 1:

Place shutter next to the window in the desired location. Mark holes on the wall using the vertical slots on the shutter as a guide. If installation is occurring on masonry or brick, locations should be in line with mortar joints. (see Figure 1)

STEP 2:

Remove shutter from the wall. Drill 1/8" holes 2" deep into the wall surface. Make certain no electrical wires or pipes are in the wall where holes are to be drilled. If installing screws in masonry, use 1/4" carbide drill bit to drill holes in mortar joints and use masonry anchors. (see Figure 2)

STEP 3:

Hold shutter in position and secure in place using screws provided. Place screw through the vertical slot on the shutter and tighten the screws only until the heads are flush with the surface. Do not over-tighten. (see Figure 3)

STEP 4:

Snap battens onto the shutter to conceal screws.

Note: The above instructions are used for all Board-n-Batten shutters.